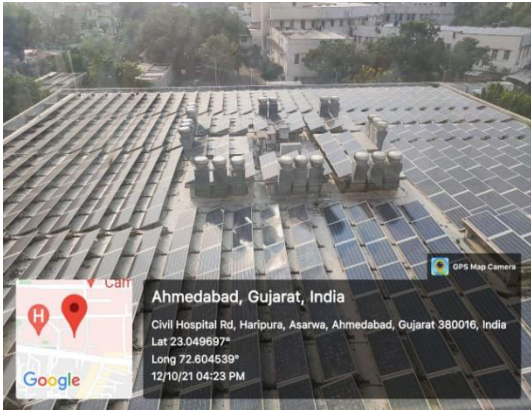
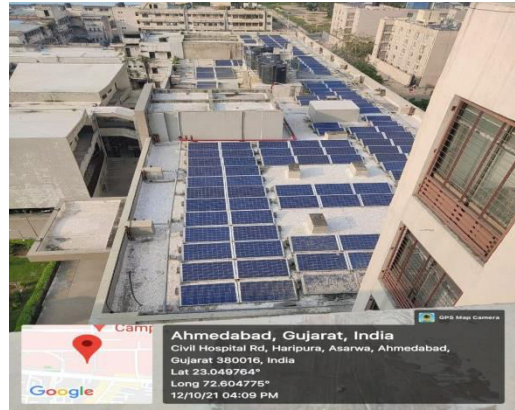


Geotagged Photos

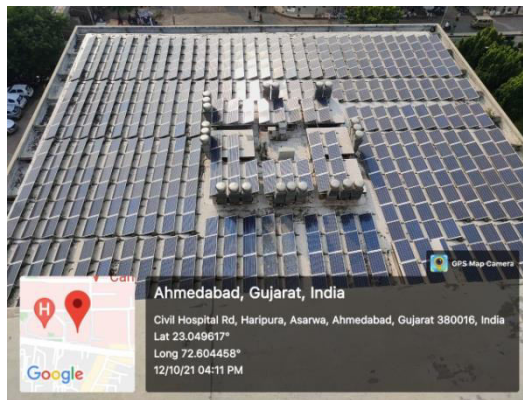
Solar Energy



Solar panel 1

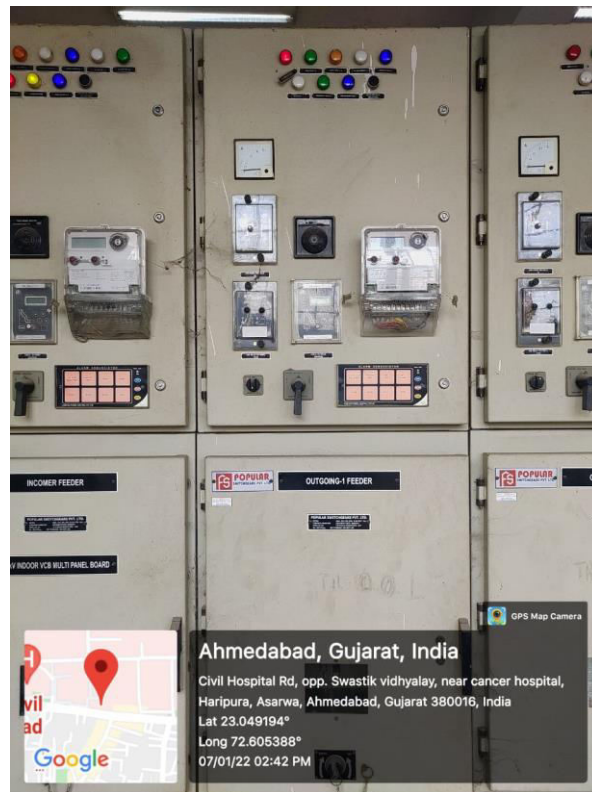


Solar panel 2

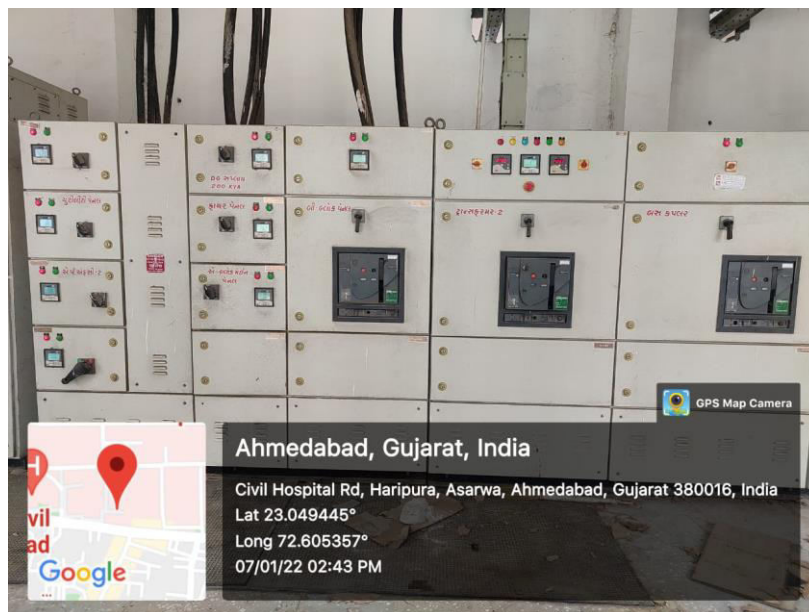


Solar panel 3

Wheeling to the Grid



HT-High tension panel

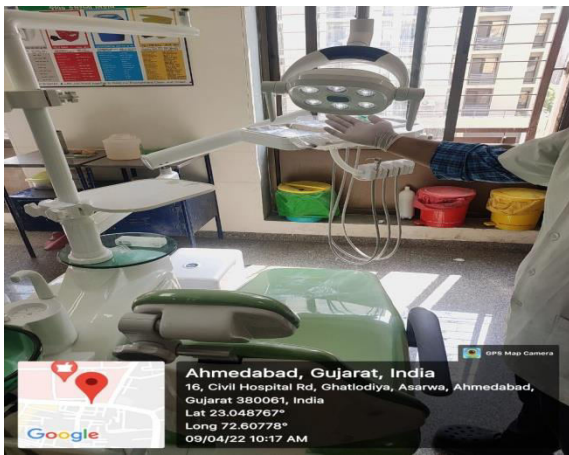


LT-Low tension panel

Wheeling to the Grid

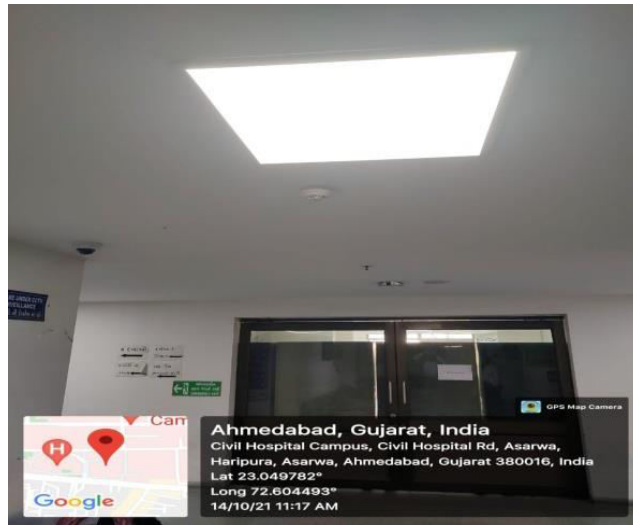


Sensor based energy Conservation



Sensor based LED lights on Dental Chair Units in Multiple Departments

LED Lights



Regd. A.D.

KA/HT- 8000197/ 3731
30.11.2018

To,
THE DEAN, DENTAL HOSPITAL
GOVT. DENTAL COLLEGE & HOSPITAL,
CIVIL HOSPITAL CAMPUS, ASARWA
AHMEDABAD - 380 016

Dear Sir

Sub: Raising of Contract Demand from 250 KW to 750 KW at HT-8000197

We are pleased to inform you that the contract demand for HT service No. 8000197 have now been raised by 500 KW and fixed at a level of 750 KW with effect from 01.12.2018.

Please do let us know in case of any query in this matter. We will be glad to assist you.

Thank you for your continued support and assuring you of our best services and attention at all times.

Thanking you,

Yours faithfully,
For, **Torrent Power Ltd;**


Sweta Shah
Manager (Customer Services)

Inward No. 2824
Date: 30.12.18
Govt. Dental College
& Hospital, Ahmedabad.

TORRENT POWER LIMITED

CIN : L31200GJ2004PLC044068

Key Accounts, Naranpura Zonal Office, Sola Road, Ahmedabad-380 013, Phone : 079 2749 2222
Reg. Office : "Samanvay", 600, Tapovan, Ambawadi, Ahmedabad - 380015 India. www.torrentpower.com

Project Implementation Unit

Health, Family Welfare and Medical Services

Project Office, B/h B.J. Medical College, Civil Hospital, Asarwa, Ahmedabad-16.

Phone/Fax No. 079-22685017.

Email – piuelectricalmedicity@gmail.com

DT: 07/07/2022

Certificate for Solar Generation

This is to certify that In dental hospital and college building installed 200 kwp captive solar power plant, Solar panel generation direct connected to LT distribution panel for consuming solar generation. So that Torrent meter not shows any solar reading.


Kalpaen
7/11/22

**Dy Executive Engineer (Elect)
PIU, Ahmedabad**

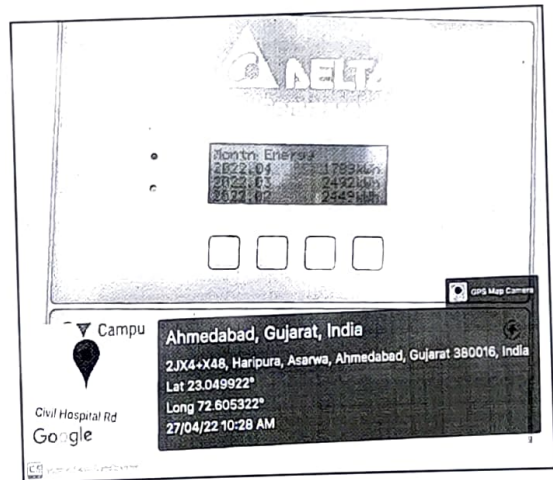
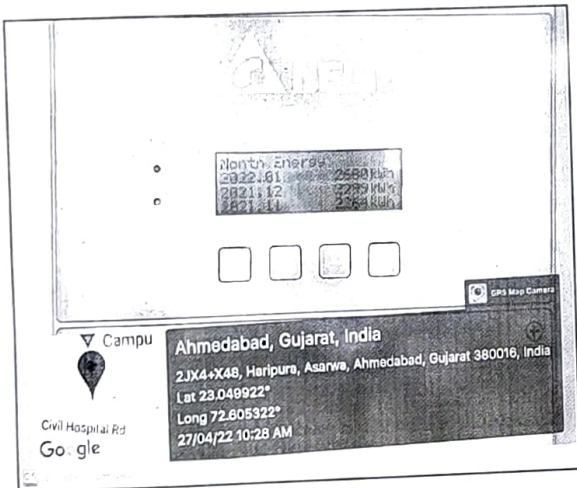
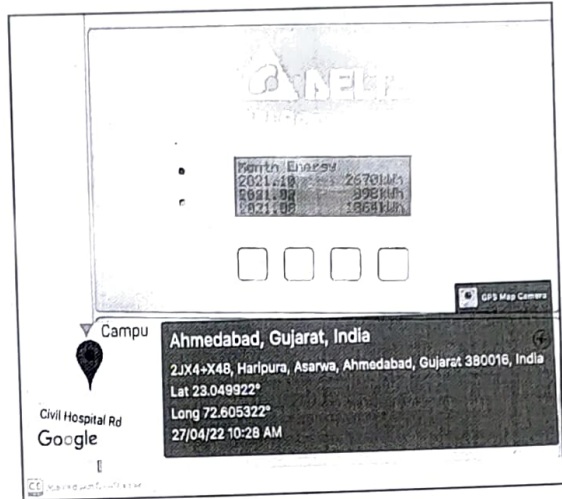
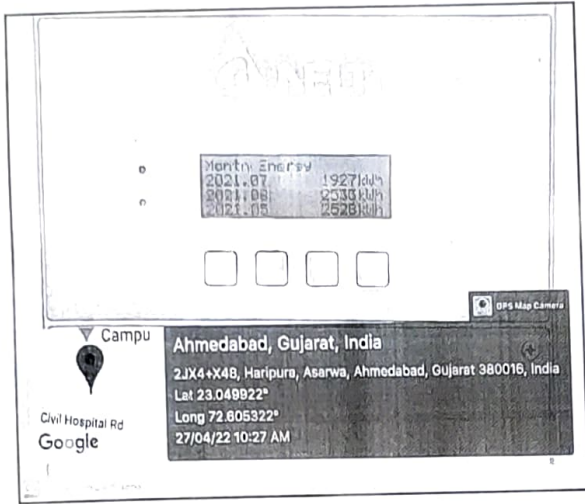
Solar Energy Generated by Solar Panel at

GDCH, Ahmedabad

| Month | Inverter 1 | Inverter 2 | Inverter 3 |
|---|------------|------------|------------|
| May 21 | 2528 kwh | 2956 kwh | 3192 kwh |
| Jun 21 | 2533 kwh | 2911 kwh | 3434 kwh |
| Jul 21 | 1927 kwh | 1914 kwh | 2433 kwh |
| Aug 21 | 1864 kwh | 2288 kwh | 2461 kwh |
| Sep 21 | 898 kwh | 593 kwh | 459 kwh |
| Oct 21 | 2670 kwh | 3162 kwh | 2952 kwh |
| Nov 21 | 2264 kwh | 2890 kwh | 2611 kwh |
| Dec 21 | 2299 kwh | 2849 kwh | 2645 kwh |
| Jan 22 | 2680 kwh | 3440 kwh | 3067 kwh |
| Feb 22 | 2449 kwh | 3095 kwh | 2811 kwh |
| Mar 22 | 2492 kwh | 3137 kwh | 2914 kwh |
| Apr 22 | 1789 kwh | 2224 kwh | 2234 kwh |
| Total | 26393 kwh | 31459 kwh | 31213 kwh |
| Total Solar Energy Generated: 89065 kwh | | | |

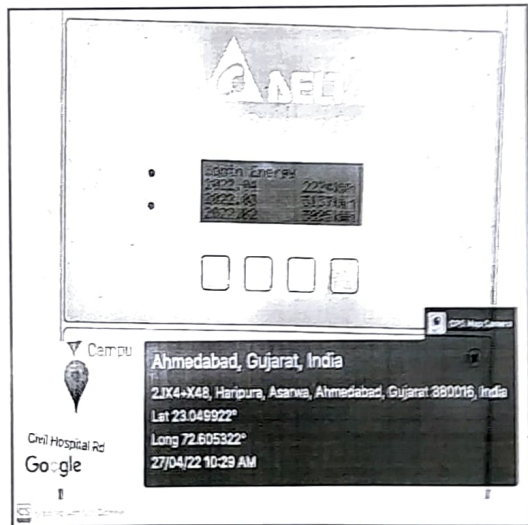
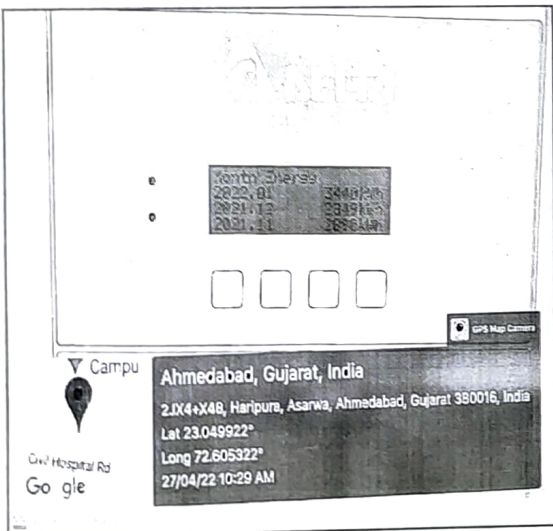
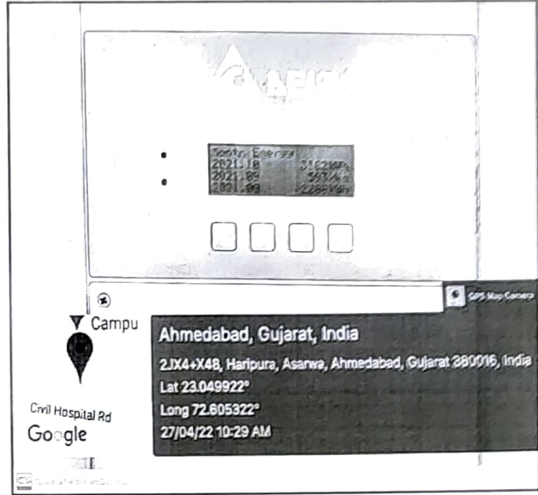
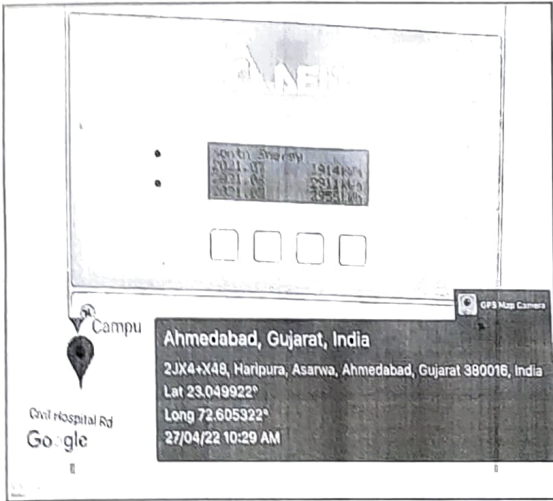

S. K. Joshi
Assistant Engineer (Elect.)
Project Implementation Unit
Civil Hospital Asarva Ahmedabad.

Inverter 1 readings at GDCH, Ahmedabad



S. K. Joshi
S. K. Joshi
 Assistant Engineer (Elect.)
 Project Implementation Unit
 Civil Hospital Asarwa Ahmedabad.

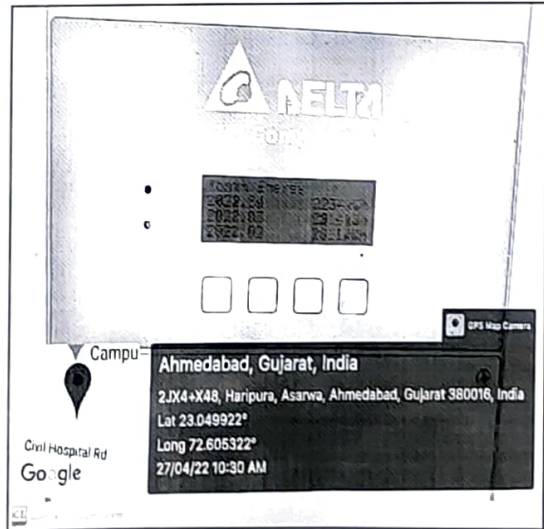
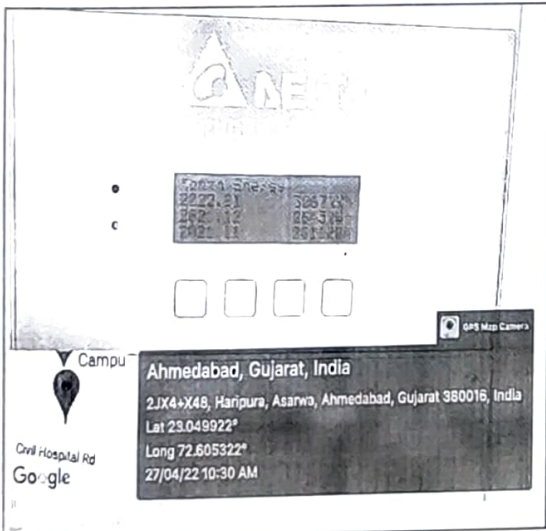
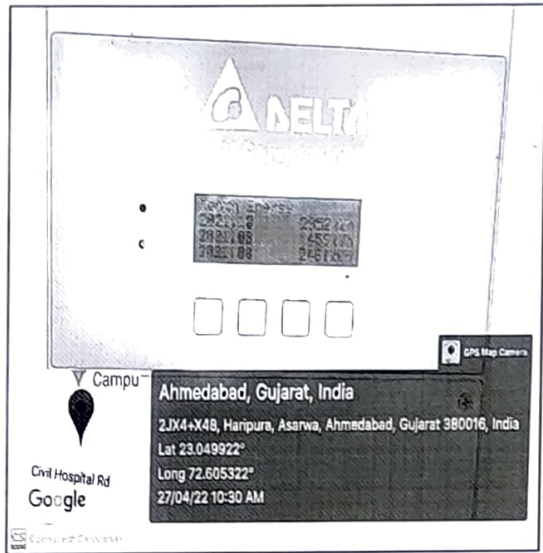
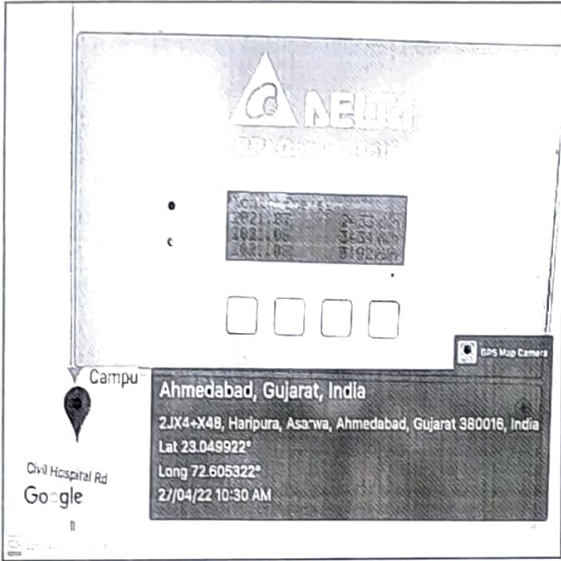
Inverter 2 readings at GDCH, Ahmedabad

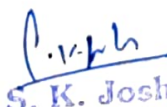


S. K. Joshi

S. K. Joshi
 Assistant Engineer (Elect.)
 Project Implementation Unit
 Civil Hospital Asarwa Ahmedabad.

Inverter 3 readings at GDCH, Ahmedabad




S. K. Joshi
 Assistant Engineer (Elect.)
 Project Implementation Unit
 Civil Hospital Asarwa Ahmedabad.